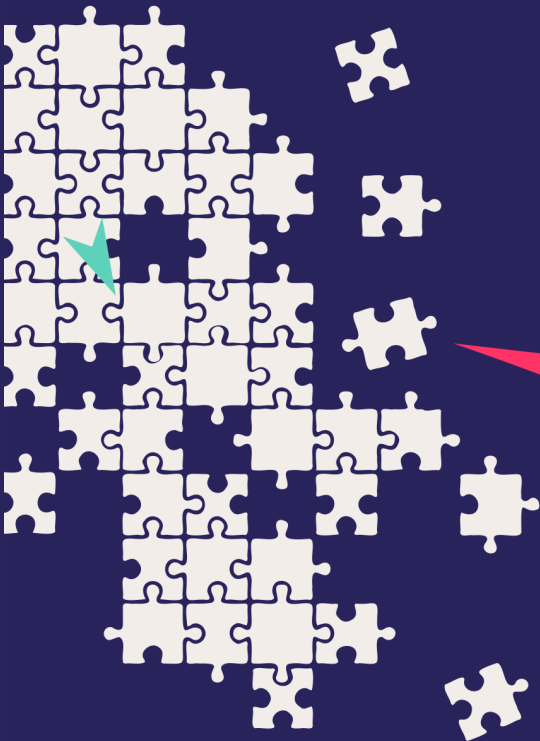


JAZZ  
SOUTH



COMMISSIONS

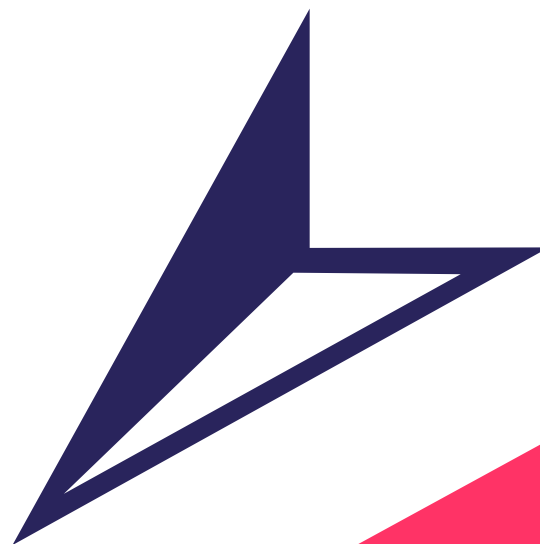
# BREAKTHROUGH

JAZZ SOUTH

GUIDELINES AND INFORMATION 2020

# CONTENTS

Jazz South Breakthrough Commissions .....	3
Commissioners – who can commission the music and what do they need to do? .....	3
Composers – who can create a new commission and what do they need to do? .....	3
What can the music involve and how should it be presented? .....	3
Jazz South support .....	4
Awards .....	4
Matched funding .....	4
Budgets .....	4
General Conditions .....	5
How will decisions be made? .....	5
How to apply .....	6
Notification of decisions .....	6



**Jazz South  
Commissions  
are about  
innovation, ambition  
and artistic aspiration and  
aim to celebrate and support  
jazz in the South**

# JAZZ SOUTH BREAKTHROUGH COMMISSIONS

**Jazz South Breakthrough Commissions** are a creative development opportunity for early career composers within jazz and improvisation in the South. Four composers will be selected to realise original, creative ideas, supported by a package of mentoring, to each create a new piece for digital broadcast from a venue in the Jazz South region in early 2021. The scheme is part of a suite of Jazz South Commissions opportunities for jazz artists in the South, including **Platform South Commissions** and **Jazz South Radar Commissions**.

## **Commissioners – who can commission the music and what do they need to do?**

Applications for new commissions are invited directly from early career composers or from other organisations and individuals who are permanently based in the South, such as promoters, clubs, festivals, venues, curators, producers, who may wish to promote the commission through a digital broadcast from a venue in the Jazz South region.

There is no requirement for additional partners but applications may indicate how you would envisage the new commission to be presented and if you have any collaborators in-mind or you have already spoken to.

Applicants should read the full guidance and apply through our online application form.

**Jazz South Breakthrough Commissions are a creative development opportunity for early career composers**

## **Composers – who can create a new commission and what do they need to do?**

Jazz South Breakthrough Commissions are aimed at early career artists – within their first five years of professional experience - who are based in the Jazz South region. Other creative collaborators may be involved from any music genre or art form. The composer may be part of the performance or create the commission for performance by others. In either case the composer will lead rehearsals and broadcast performance preparations. Other musicians or creative collaborators are not required to reside within the Jazz South region.

## **What can the music involve and how should it be presented?**

Each commission is an opportunity for a composer to realise an artistic idea and create original music, potentially as a first major commission. There is no limit to line-up or configuration (including electronic, digital or video), wider musical influence or cross-artform collaboration and no limit to ensemble size – although sustainability of performing and touring the piece in the future will be taken into account. The new work should be a minimum of 12-15 minutes and may be part of a longer band performance. The commission should be performed to a high standard. If proposals include predominantly freely improvised or spontaneously composed work, there must be clear plans outlining preparations for a successful performance.

## **Jazz South support**

A package of mentoring will be offered for the selected composers to support the process of creating, presenting and performing the new commissions for broadcast. We will work with other partners to support each commissioned project with technical advice and resources to record, film and digitally broadcast the work. The intention is to audio record and film each commission for broadcast in a venue in the South – the way in which this will be achieved will be discussed with each of the composers selected.

## **Awards**

Up to £3,000 will be awarded to each new commission. This will be to support the commission fee, rehearsals and performance fees for all band members. Applicants should complete a budget template for the funding required (**see Budgets**)

## **What is the correct composer fee?**

We are unable to advise on appropriate fees for composers and any other creative collaborators. However, these should reflect their experience and the time it will take to create the new work. We would advise that you contact the [Musicians' Union](#) for advice, referring to the free resources online and additional member support.

## **What are the correct rehearsal and performance costs?**

We expect all performers to be paid reasonable fees that reflect the profile of the performers. As an Arts Council England funded scheme, we will refer to [Musicians Union](#) rates as a minimum for performances and rehearsals. Other sources of reference include [Equity](#), the UK union for creative practitioners. Where non-professional performers are involved, budgets should indicate whether they will be paid a fee.

## **Matched funding and other partners**

There are no requirements for matched funding from applicants to this scheme and no requirement for additional partners. However, you may outline any support you have been offered, any partners who you have approached or would wish to approach to promote the new commission now or at a live performance in the future.

## **Budgets**

Applicants will need to complete a [Budget Template](#) for the following:

- Commission fees for the composer and any other creative collaborators plus expenses (e.g. printing of scores; travel costs; access costs)
- Rehearsal fees for performers, rehearsal costs (e.g. room hire), travel expenses, access costs.
- Performances fees (**see here**) and expenses
- Equipment costs – e.g. backline if required



# CONDITIONS

## General Conditions and timeframes

- 4 commissioning proposals will be selected and supported by a maximum award of £3,000 each
- Open applications will be invited up to 5.00pm Friday 31 July 2020
- Composers or other applicants should be permanently based in the Jazz South region
- Selected composers will be informed in August 2020
- Commissions will be created between September and December 2020 with recording and broadcast to take place January-February 2021

## Can I also apply for Jazz South Radar Commissions?

No, the schemes are sufficiently different. Applicants should only apply to one scheme and decide which best suits their eligibility and circumstances guided by the criteria. Individuals are allowed to be a part of someone else's project (i.e. as a performer, creative collaborator or promoter) but will not be eligible to be the lead composer in two applications.

Check [here](#) for a list of FAQs that will be regularly updated.

# DECISIONS

## How will decisions be made?

A selection panel, including representation from the jazz and wider music industry, will consider each application and make the final decisions. Proposals for funding will be considered against the following criteria:

- Artistic vision and musical quality
- Track record of the composer for creating and realising original material and the case made for support
- Diversity of composers
- Diversity of music and creative styles
- Geography of composers within the Jazz South region

## Jazz South supports diversity and gender equality within its projects and actively encourages proposals from composers from different backgrounds

# APPLY

## How to apply

Each applicant should complete an online application form and include the following:

- Details of the concept for the new commission
- Track record of the composer to create and manage original writing projects
- Biographies and track record of each performer and creative collaborator
- Two online audio or video samples of original work by the composer
- A written or video statement (up to 3 minutes) by the composer outlining why they wish to be supported and how the project will contribute to their creative and personal development
- A referee statement from a promoter, producer, programmer, artist or anyone in the industry who has had experience of the composers' work and is able to recommend their experience to manage the budget and deliver the project
- An additional referee statement (as above) if the applicant is not the composer, to recommend the commissioner's experience to manage the budget and deliver the project

## Notification of decisions

All applicants will be notified whether they have been successful or not by email. We are sorry that we cannot offer individual feedback.

## Links and support

If you would like any guidance with your application or you have any questions about the suitability of your project please get in touch with **Tamsin Mendelsohn, Jazz South Manager** at **[manager@jazzsouth.org.uk](mailto:manager@jazzsouth.org.uk)**

## Details and the online application form:

<https://jazzsouth.org.uk/current-projects/jazz-south-commissions/>

